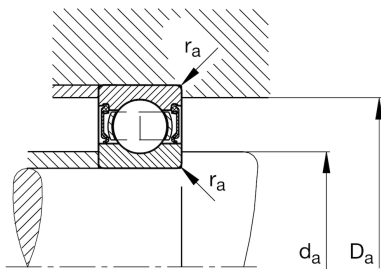
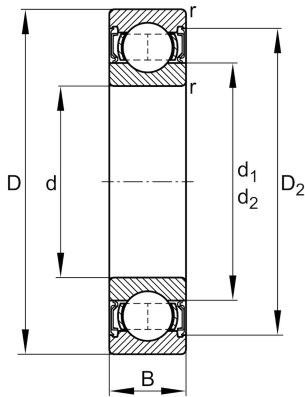


**FAG****62205-A-2RSR**

Deep groove ball bearing

Schaeffler ID:
0596569480000Deep groove ball bearing 622..-A-2RSR,
single row, steel sheet metal cage

Technical information

**Main Dimensions & Performance Data**

d	25 mm	Bore diameter
D	52 mm	Outside diameter
B	18 mm	Width
C_r	14.020 N	Basic dynamic load rating, radial
C_{0r}	7.880 N	Basic static load rating, radial
C_{ur}	540 N	Fatigue load limit, radial
n_G	7.900 1/min	Limiting speed
	0,154 kg	Weight

Mounting dimensions

$d_{a \min}$	30,6 mm	Minimum diameter shaft shoulder
$D_{a \max}$	46,4 mm	Maximum diameter of housing shoulder
$r_{a \max}$	1 mm	Maximum fillet radius

Dimensions

r_{\min}	1 mm	Minimum chamfer dimension
D_2	46,3 mm	Caliber diameter outer ring
d_1	33,95 mm	Shoulder diameter inner ring

Temperature range

T_{\min}	-20 °C	Operating temperature min.
T_{\max}	100 °C	Operating temperature max.

Calculation factors

f_0	13,9	Calculation factor
-------	------	--------------------