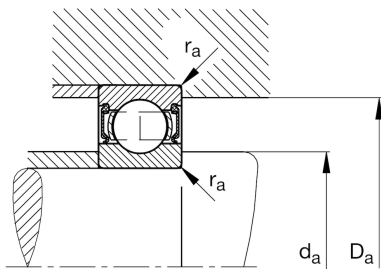
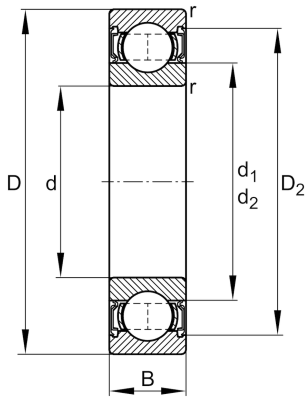


**FAG****62202-A-2RSR-C3**

Deep groove ball bearing

Schaeffler ID:
0596148380030Deep groove ball bearing 622..-A-2RSR,
single row, steel sheet metal cage

Technical information

**Main Dimensions & Performance Data**

d	15 mm	Bore diameter
D	35 mm	Outside diameter
B	14 mm	Width
C_r	7.730 N	Basic dynamic load rating, radial
C_{0r}	3.760 N	Basic static load rating, radial
C_{ur}	220 N	Fatigue load limit, radial
n_G	12.700 1/min	Limiting speed
	0,056 kg	Weight

Mounting dimensions

$d_{a \min}$	19,2 mm	Minimum diameter shaft shoulder
$D_{a \max}$	30,8 mm	Maximum diameter of housing shoulder
$r_{a \max}$	0,6 mm	Maximum fillet radius

Dimensions

r_{\min}	0,6 mm	Minimum chamfer dimension
D_2	30,56 mm	Caliber diameter outer ring
d_1	21,05 mm	Shoulder diameter inner ring

Temperature range

T_{\min}	-20 °C	Operating temperature min.
T_{\max}	100 °C	Operating temperature max.

Calculation factors

f_0	13,1	Calculation factor
-------	------	--------------------