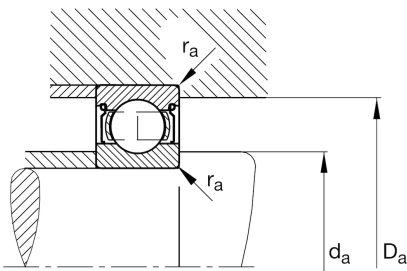
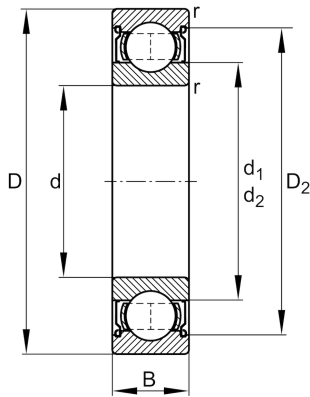


**FAG****6219-2Z**

Deep groove ball bearing

Schaeffler ID:
0167216080000Deep groove ball bearing 62...-2Z, single
row, shields, steel sheet metal cage

Technical information

**Main Dimensions & Performance Data**

| | | |
|----------|-------------|-----------------------------------|
| d | 95 mm | Bore diameter |
| D | 170 mm | Outside diameter |
| B | 32 mm | Width |
| C_r | 116.000 N | Basic dynamic load rating, radial |
| C_{0r} | 82.000 N | Basic static load rating, radial |
| C_{ur} | 4.800 N | Fatigue load limit, radial |
| n_G | 4.550 1/min | Limiting speed |
| n_{gr} | 4.950 1/min | Reference speed |
| | 2,73 kg | {Weight} |

Mounting dimensions

| | | |
|--------------|--------|--------------------------------------|
| $d_{a \min}$ | 107 mm | Minimum diameter shaft shoulder |
| $D_{a \max}$ | 158 mm | Maximum diameter of housing shoulder |
| $r_{a \max}$ | 2,1 mm | Maximum fillet radius |

Dimensions

| | | |
|------------|-----------|------------------------------|
| r_{\min} | 2,1 mm | Minimum chamfer dimension |
| D_2 | 150,86 mm | Caliber diameter outer ring |
| d_1 | 118,3 mm | Shoulder diameter inner ring |

Temperature range

| | | |
|------------|--------|----------------------------|
| T_{\min} | -20 °C | Operating temperature min. |
| T_{\max} | 120 °C | Operating temperature max. |

Calculation factors

| | | |
|-------|------|--------------------|
| f_0 | 14,5 | Calculation factor |
|-------|------|--------------------|