

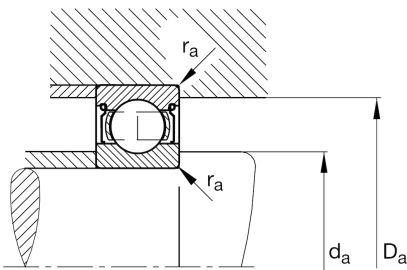
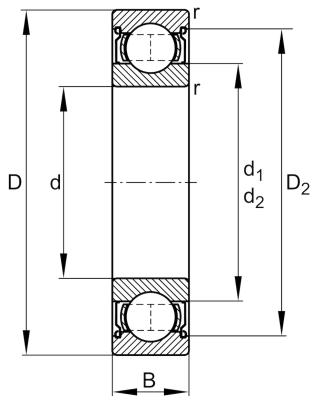
FAG

**6216-2Z**

Deep groove ball bearing

Schaeffler ID:  
0167213900000Deep groove ball bearing 62...-2Z, single  
row, shields, steel sheet metal cage

## Technical information

**Main Dimensions & Performance Data**

d	80 mm	Bore diameter
D	140 mm	Outside diameter
B	26 mm	Width
$C_r$	77.000 N	Basic dynamic load rating, radial
$C_{0r}$	55.000 N	Basic static load rating, radial
$C_{ur}$	3.650 N	Fatigue load limit, radial
$n_G$	6.200 1/min	Limiting speed
$n_{gr}$	5.500 1/min	Reference speed
	1,49 kg	Weight

**Dimensions**

$r_{min}$	2 mm	Minimum chamfer dimension
$D_2$	124,4 mm	Caliber diameter outer ring
$d_1$	98,5 mm	Shoulder diameter inner ring

**Mounting dimensions**

$d_{amin}$	91 mm	Minimum diameter shaft shoulder
$D_{amax}$	129 mm	Maximum diameter of housing shoulder
$r_{amax}$	2 mm	Maximum fillet radius

**Calculation factors**

$f_0$	15	Calculation factor
-------	----	--------------------

**Temperature range**

$T_{min}$	-20 °C	Operating temperature min.
$T_{max}$	120 °C	Operating temperature max.