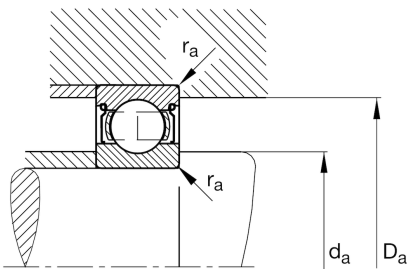
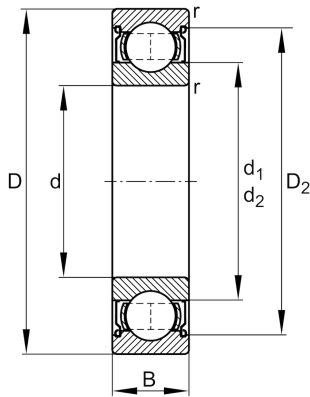


**FAG****6214-2Z**

Deep groove ball bearing

Schaeffler ID:
0167211870000Deep groove ball bearing 62...-2Z, single
row, shields, steel sheet metal cage

Technical information

**Main Dimensions & Performance Data**

d	70 mm	Bore diameter
D	125 mm	Outside diameter
B	24 mm	Width
C_r	66.000 N	Basic dynamic load rating, radial
C_{0r}	44.000 N	Basic static load rating, radial
C_{ur}	3.000 N	Fatigue load limit, radial
n_G	7.000 1/min	Limiting speed
n_{gr}	6.100 1/min	Reference speed
	1,09 kg	{Weight}

Mounting dimensions

$d_{a \min}$	79 mm	Minimum diameter shaft shoulder
$D_{a \max}$	116 mm	Maximum diameter of housing shoulder
$r_{a \max}$	1,5 mm	Maximum fillet radius

Dimensions

r_{\min}	1,5 mm	Minimum chamfer dimension
D_2	110,72 mm	Caliber diameter outer ring
d_1	86,75 mm	Shoulder diameter inner ring

Temperature range

T_{\min}	-20 °C	Operating temperature min.
T_{\max}	120 °C	Operating temperature max.

Calculation factors

f_0	14,4	Calculation factor
-------	------	--------------------