



FAG

## ★ 6213-2Z

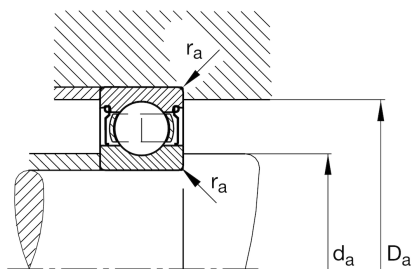
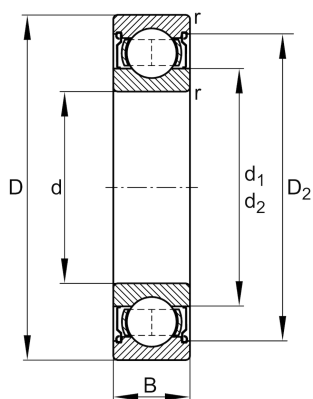
Deep groove ball bearing

Schaeffler ID:  
0167210630000

Deep groove ball bearing 62...-2Z, single row, shields, steel sheet metal cage

★ Preferred product

## Technical information



## Main Dimensions &amp; Performance Data

d	65 mm	Bore diameter
D	120 mm	Outside diameter
B	23 mm	Width
$C_r$	63.000 N	Basic dynamic load rating, radial
$C_{0r}$	41.500 N	Basic static load rating, radial
$C_{ur}$	2.850 N	Fatigue load limit, radial
$n_G$	7.300 1/min	Limiting speed
$n_{gr}$	6.300 1/min	Reference speed
	1 kg	Weight

## Dimensions

$r_{min}$	1,5 mm	Minimum chamfer dimension
$D_2$	106,3 mm	Caliber diameter outer ring
$d_1$	82 mm	Shoulder diameter inner ring

## Mounting dimensions

$d_{amin}$	74 mm	Minimum diameter shaft shoulder
$D_{amax}$	111 mm	Maximum diameter of housing shoulder
$r_{amax}$	1,5 mm	Maximum fillet radius

## Calculation factors

$f_0$	14,4	Calculation factor
-------	------	--------------------

## Temperature range

$T_{min}$	-20 °C	Operating temperature min.
$T_{max}$	120 °C	Operating temperature max.