

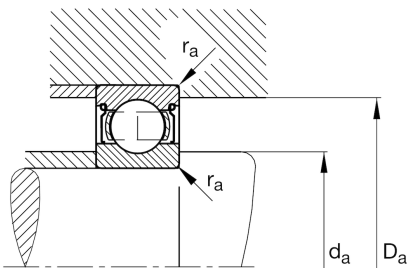
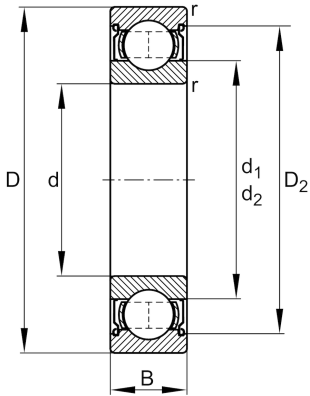
**FAG**★ **6206-2Z**

Deep groove ball bearing

Schaeffler ID:  
0167200670000Deep groove ball bearing 62...-2Z, single  
row, shields, steel sheet metal cage

★ Preferred product

## Technical information



## Temperature range

$T_{\min}$	-20 °C	Operating temperature min.
$T_{\max}$	120 °C	Operating temperature max.
	0,196 kg	Weight

## Main Dimensions &amp; Performance Data

$d$	30 mm	Bore diameter
$D$	62 mm	Outside diameter
$B$	16 mm	Width
$C_r$	20.700 N	Basic dynamic load rating, radial
$C_{0r}$	11.300 N	Basic static load rating, radial
$C_{ur}$	700 N	Fatigue load limit, radial
$n_G$	13.800 1/min	Limiting speed
$n_{gr}$	12.000 1/min	Reference speed

## Dimensions

$r_{\min}$	1 mm	Minimum chamfer dimension
$D_2$	54,9 mm	Caliber diameter outer ring
$d_1$	40 mm	Shoulder diameter inner ring

## Mounting dimensions

$d_{a \min}$	35,6 mm	Minimum diameter shaft shoulder
$D_{a \max}$	56,4 mm	Maximum diameter of housing shoulder
$r_{a \max}$	1 mm	Maximum fillet radius

## Calculation factors

$f_0$	13,8	Calculation factor
-------	------	--------------------