

FAG

## ★ 6205-C

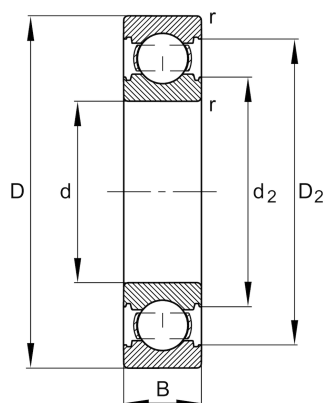
Deep groove ball bearing

Schaeffler ID:  
0621661400000

Deep groove ball bearing 62...-C, single row, Generation C, steel sheet metal cage

★ Preferred product

## Technical information



## Main Dimensions &amp; Performance Data

d	25 mm	Bore diameter
D	52 mm	Outside diameter
B	15 mm	Width
$C_r$	15.900 N	Basic dynamic load rating, radial
$C_{0r}$	7.800 N	Basic static load rating, radial
$C_{ur}$	530 N	Fatigue load limit, radial
$n_G$	21.600 1/min	Limiting speed
$n_{gr}$	16.000 1/min	Reference speed
	0,117 kg	Weight

## Dimensions

$r_{min}$	1 mm	Minimum chamfer dimension
$D_2$	46,4 mm	Caliber diameter outer ring
$d_2$	31,4 mm	Caliber diameter inner ring

## Mounting dimensions

$d_{amin}$	30,6 mm	Minimum diameter shaft shoulder
$D_{amax}$	46,4 mm	Maximum diameter of housing shoulder
$r_{amax}$	1 mm	Maximum fillet radius

## Calculation factors

$f_0$	13,8	Calculation factor
-------	------	--------------------

## Temperature range

$T_{min}$	-30 °C	Operating temperature min.
$T_{max}$	120 °C	Operating temperature max.

