

FAG

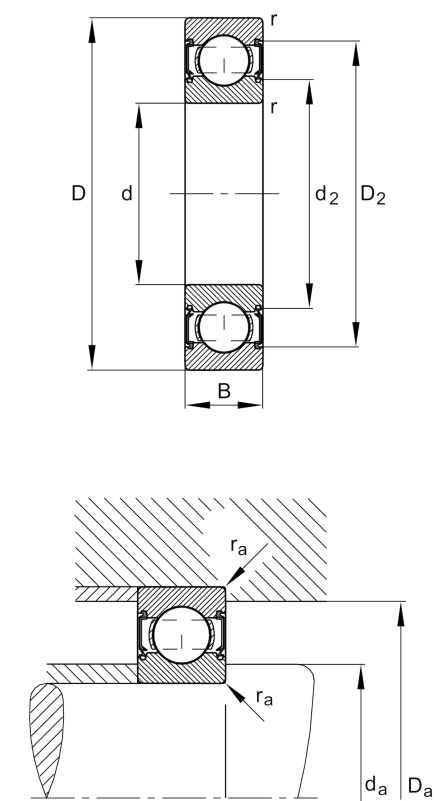
6202-C-2HRS

Deep groove ball bearing

Schaeffler ID:
0592428170000

Deep groove ball bearing 62...-C-2HRS, single row, Generation C, seals, steel sheet metal cage

Technical information



Temperature range		
T _{min}	-20 °C	Operating temperature min.
T _{max}	110 °C	Operating temperature max.
	0,044 kg	Weight

Main Dimensions & Performance Data		
d	15 mm	Bore diameter
D	35 mm	Outside diameter
B	11 mm	Width
C _r	8.900 N	Basic dynamic load rating, radial
C _{0r}	3.750 N	Basic static load rating, radial
C _{ur}	260 N	Fatigue load limit, radial
n _G	19.400 1/min	Limiting speed

Dimensions		
r _{min}	0,6 mm	Minimum chamfer dimension
D ₂	30,9 mm	Caliber diameter outer ring
d ₂	20,1 mm	Caliber diameter inner ring

Mounting dimensions		
d _{a min}	19,2 mm	Minimum diameter shaft shoulder
D _{a max}	30,8 mm	Maximum diameter of housing shoulder
r _{a max}	0,6 mm	Maximum fillet radius

Calculation factors		
f ₀	13	Calculation factor