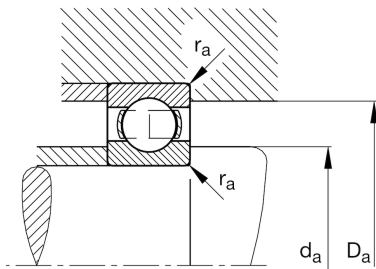
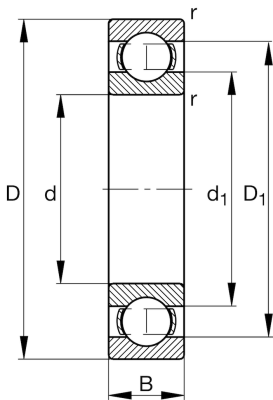


**FAG****6200-H**

Deep groove ball bearing

Schaeffler ID:
0937949590000Deep groove ball bearing 62...-H, single
row, H-Series, steel sheet metal cage

Technical information

**Main Dimensions & Performance Data**

d	10 mm	Bore diameter
D	30 mm	Outside diameter
B	9 mm	Width
C_r	5.400 N	Basic dynamic load rating, radial
C_{0r}	2.390 N	Basic static load rating, radial
C_{ur}	126 N	Fatigue load limit, radial
n_G	37.500 1/min	Limiting speed
n_{gr}	22.500 1/min	Reference speed
	0,031 kg	{Weight}

Mounting dimensions

$d_{a \min}$	14,2 mm	Minimum diameter shaft shoulder
$D_{a \max}$	25,8 mm	Maximum diameter of housing shoulder
$r_{a \max}$	0,6 mm	Maximum fillet radius

Dimensions

r_{\min}	0,6 mm	Minimum chamfer dimension
D_1	23,8 mm	Shoulder diameter outer ring
d_1	17,4 mm	Shoulder diameter inner ring

Temperature range

T_{\min}	-30 °C	Operating temperature min.
T_{\max}	120 °C	Operating temperature max.

Calculation factors

f_0	13,2	Calculation factor
-------	------	--------------------