

FAG

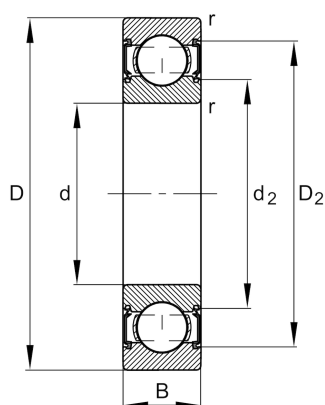
## ★ 6200-C-2HRS

Deep groove ball bearing

Schaeffler ID:  
0621487960000Deep groove ball bearing 62...-C-2HRS,  
single row, Generation C, seals, steel  
sheet metal cage

★ Preferred product

## Technical information



## Main Dimensions &amp; Performance Data

d	10 mm	Bore diameter
D	30 mm	Outside diameter
B	9 mm	Width
$C_r$	7.000 N	Basic dynamic load rating, radial
$C_{0r}$	2.600 N	Basic static load rating, radial
$C_{ur}$	181 N	Fatigue load limit, radial
$n_G$	26.000 1/min	Limiting speed
	0,03 kg	Weight

## Dimensions

$r_{min}$	0,6 mm	Minimum chamfer dimension
$D_2$	25,7 mm	Caliber diameter outer ring
$d_2$	15,1 mm	Caliber diameter inner ring

## Mounting dimensions

$d_{amin}$	14,2 mm	Minimum diameter shaft shoulder
$D_{amax}$	25,8 mm	Maximum diameter of housing shoulder
$r_{amax}$	0,6 mm	Maximum fillet radius

## Calculation factors

$f_0$	12	Calculation factor
-------	----	--------------------

## Temperature range

$T_{min}$	-20 °C	Operating temperature min.
$T_{max}$	110 °C	Operating temperature max.

