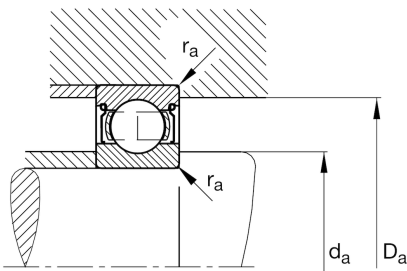
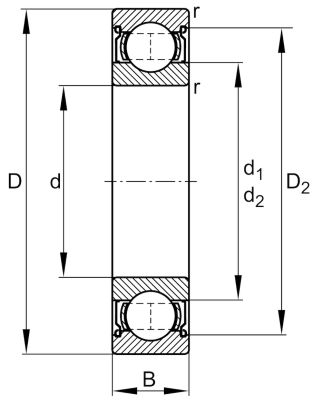


**FAG****61900-2Z-HLC-C2**

Deep groove ball bearing

Schaeffler ID:
0554582620020Deep groove ball bearing 619..-2Z, single
row, shields, steel sheet metal cage

Technical information

**Main Dimensions & Performance Data**

d	10 mm	Bore diameter
D	22 mm	Outside diameter
B	6 mm	Width
C_r	2.700 N	Basic dynamic load rating, radial
C_{0r}	1.270 N	Basic static load rating, radial
C_{ur}	67 N	Fatigue load limit, radial
n_G	41.000 1/min	Limiting speed
n_{gr}	27.000 1/min	Reference speed
	0,009 kg	{Weight}

Mounting dimensions

$d_{a \min}$	12 mm	Minimum diameter shaft shoulder
$D_{a \max}$	20 mm	Maximum diameter of housing shoulder
$r_{a \max}$	0,3 mm	Maximum fillet radius

Dimensions

r_{\min}	0,3 mm	Minimum chamfer dimension
D_2	19,4 mm	Caliber diameter outer ring
d_2	13,2 mm	Caliber diameter inner ring

Temperature range

T_{\min}	-30 °C	Operating temperature min.
T_{\max}	120 °C	Operating temperature max.

Calculation factors

f_0	14	Calculation factor
-------	----	--------------------