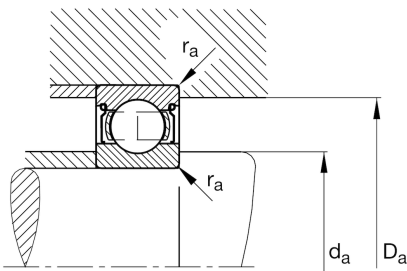
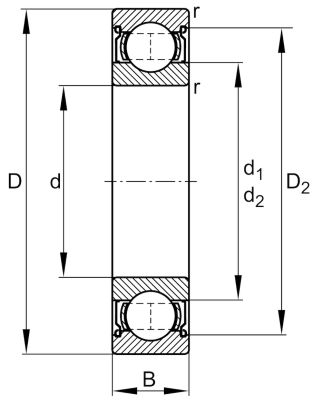


**FAG****6026-2Z**

Deep groove ball bearing

Schaeffler ID:
0190027000000Deep groove ball bearing 60...-2Z, single
row, shields, steel sheet metal cage

Technical information

**Main Dimensions & Performance Data**

d	130 mm	Bore diameter
D	200 mm	Outside diameter
B	33 mm	Width
C_r	113.000 N	Basic dynamic load rating, radial
C_{0r}	101.000 N	Basic static load rating, radial
C_{ur}	5.000 N	Fatigue load limit, radial
n_G	3.800 1/min	Limiting speed
n_{gr}	4.350 1/min	Reference speed
	3,33 kg	{Weight}

Mounting dimensions

$d_{a \min}$	138,8 mm	Minimum diameter shaft shoulder
$D_{a \max}$	191,2 mm	Maximum diameter of housing shoulder
$r_{a \max}$	2 mm	Maximum fillet radius

Dimensions

r_{\min}	2 mm	Minimum chamfer dimension
D_2	182,08 mm	Caliber diameter outer ring
d_1	152,85 mm	Shoulder diameter inner ring

Temperature range

T_{\min}	-20 °C	Operating temperature min.
T_{\max}	120 °C	Operating temperature max.

Calculation factors

f_0	15,8	Calculation factor
-------	------	--------------------