



FAG

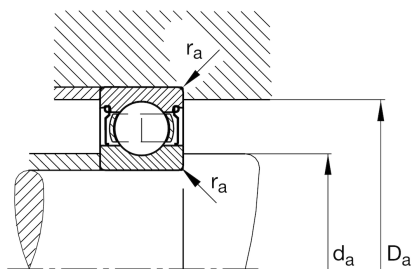
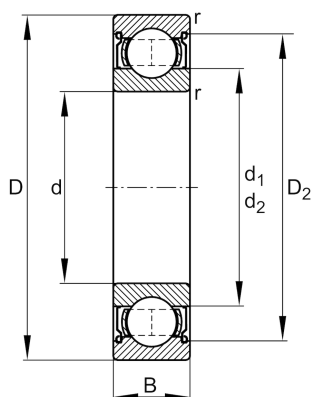
6010-2Z

Deep groove ball bearing

Schaeffler ID:
0167176940000

Deep groove ball bearings 60..-2Z, main dimensions to DIN 625-1, gap seals on both sides

Technical information

**Main Dimensions & Performance Data**

d	50 mm	Bore diameter
D	80 mm	Outside diameter
B	16 mm	Width
r_{\min}	1 mm	Minimum chamfer dimension
C_r	22.000 N	Basic dynamic load rating, radial
C_{0r}	15.800 N	Basic static load rating, radial
C_{ur}	800 N	Fatigue load limit, radial
n_G	10.400 1/min	Limiting speed
n_{gr}	8.900 1/min	Reference speed
	0,262 kg	Weight

Dimensions

D_2	72,9 mm	Caliber diameter outer ring
d_1	59,8 mm	Shoulder diameter inner ring

Mounting dimensions

$d_{a \min}$	54,6 mm	Minimum diameter shaft shoulder
$D_{a \max}$	75,4 mm	Maximum diameter of housing shoulder
$r_{a \max}$	1 mm	Maximum fillet radius

Temperature range

T_{\min}	-20 °C	Operating temperature min.
T_{\max}	120 °C	Operating temperature max.

Calculation factors

f_0	15,6	Calculation factor
-------	------	--------------------