

**FAG**★ **6009-2Z**

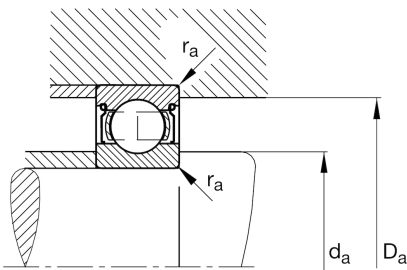
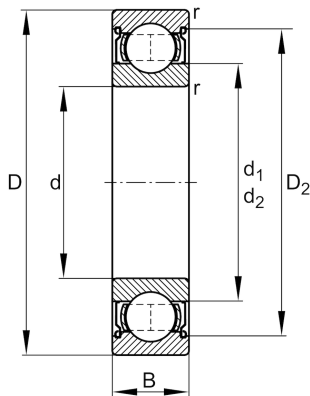
Deep groove ball bearing

Schaeffler ID:
0167176350000

Deep groove ball bearing 60...-2Z, single row, shields, steel sheet metal cage

★ Preferred product

Technical information

**Temperature range**

T_{\min}	-20 °C	Operating temperature min.
T_{\max}	120 °C	Operating temperature max.
	0,241 kg	Weight

Main Dimensions & Performance Data

d	45 mm	Bore diameter
D	75 mm	Outside diameter
B	16 mm	Width
C_r	21.200 N	Basic dynamic load rating, radial
C_{0r}	14.400 N	Basic static load rating, radial
C_{ur}	750 N	Fatigue load limit, radial
n_G	11.200 1/min	Limiting speed
n_{gr}	9.700 1/min	Reference speed

Dimensions

r_{\min}	1 mm	Minimum chamfer dimension
D_2	68 mm	Caliber diameter outer ring
d_1	54,2 mm	Shoulder diameter inner ring

Mounting dimensions

$d_{a\min}$	49,6 mm	Minimum diameter shaft shoulder
$D_{a\max}$	70,4 mm	Maximum diameter of housing shoulder
$r_{a\max}$	1 mm	Maximum fillet radius

Calculation factors

f_0	15,3	Calculation factor
-------	------	--------------------