**FAG**★ **6005-2Z**

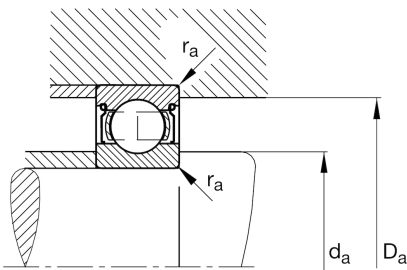
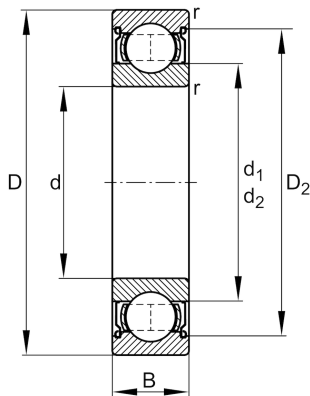
Deep groove ball bearing

Schaeffler ID:
0167172790000

Deep groove ball bearing 60...-2Z, single row, shields, steel sheet metal cage

★ Preferred product

Technical information

**Temperature range**

T_{\min}	-20 °C	Operating temperature min.
T_{\max}	120 °C	Operating temperature max.
	79 g	Weight

Main Dimensions & Performance Data

d	25 mm	Bore diameter
D	47 mm	Outside diameter
B	12 mm	Width
C_r	10.700 N	Basic dynamic load rating, radial
C_{0r}	5.900 N	Basic static load rating, radial
C_{ur}	315 N	Fatigue load limit, radial
n_G	18.600 1/min	Limiting speed
n_{gr}	15.200 1/min	Reference speed

Dimensions

r_{\min}	0,6 mm	Minimum chamfer dimension
D_2	42,5 mm	Caliber diameter outer ring
d_1	32 mm	Shoulder diameter inner ring

Mounting dimensions

$d_{a\min}$	28,2 mm	Minimum diameter shaft shoulder
$D_{a\max}$	43,8 mm	Maximum diameter of housing shoulder
$r_{a\max}$	0,6 mm	Maximum fillet radius

Calculation factors

f_0	14,6	Calculation factor
-------	------	--------------------