

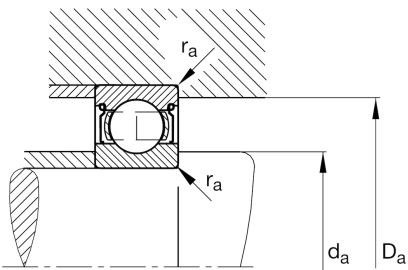
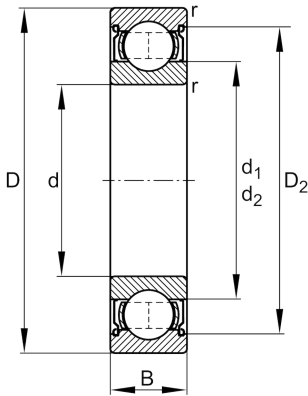
**FAG****6003-2Z**

Deep groove ball bearing

Schaeffler ID:
0167170400000

Deep groove ball bearings 60..-2Z, main dimensions to DIN 625-1, gap seals on both sides

Technical information

**Main Dimensions & Performance Data**

d	17 mm	Bore diameter
D	35 mm	Outside diameter
B	10 mm	Width
r_{\min}	0,3 mm	Minimum chamfer dimension
C_r	6.400 N	Basic dynamic load rating, radial
C_{0r}	3.250 N	Basic static load rating, radial
C_{ur}	162 N	Fatigue load limit, radial
n_G	26.000 1/min	Limiting speed
n_{gr}	20.300 1/min	Reference speed
	39,5 g	Weight

Dimensions

D_2	30,8 mm	Caliber diameter outer ring
d_1	22,7 mm	Shoulder diameter inner ring

Mounting dimensions

$d_{a \min}$	19 mm	Minimum diameter shaft shoulder
$D_{a \max}$	33 mm	Maximum diameter of housing shoulder
$r_{a \max}$	0,3 mm	Maximum fillet radius

Temperature range

T_{\min}	-20 °C	Operating temperature min.
T_{\max}	120 °C	Operating temperature max.

Calculation factors

f_0	14,3	Calculation factor
-------	------	--------------------