

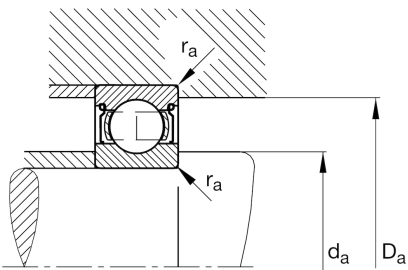
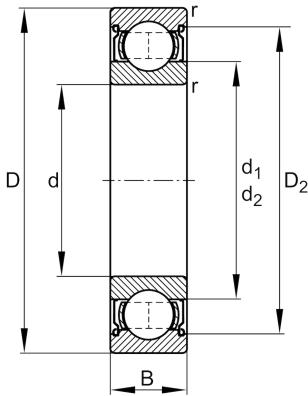
**FAG**★ **6003-2Z**

Deep groove ball bearing

Schaeffler ID:  
0167170400000Deep groove ball bearing 60...-2Z, single  
row, shields, steel sheet metal cage

★ Preferred product

## Technical information

**Temperature range**

$T_{\min}$	-20 °C	Operating temperature min.
$T_{\max}$	120 °C	Operating temperature max.
	39,5 g	Weight

**Main Dimensions & Performance Data**

d	17 mm	Bore diameter
D	35 mm	Outside diameter
B	10 mm	Width
$C_r$	6.400 N	Basic dynamic load rating, radial
$C_{0r}$	3.250 N	Basic static load rating, radial
$C_{ur}$	162 N	Fatigue load limit, radial
$n_G$	26.000 1/min	Limiting speed
$n_{gr}$	20.300 1/min	Reference speed

**Dimensions**

$r_{\min}$	0,3 mm	Minimum chamfer dimension
$D_2$	30,8 mm	Caliber diameter outer ring
$d_1$	22,7 mm	Shoulder diameter inner ring

**Mounting dimensions**

$d_{a\min}$	19 mm	Minimum diameter shaft shoulder
$D_{a\max}$	33 mm	Maximum diameter of housing shoulder
$r_{a\max}$	0,3 mm	Maximum fillet radius

**Calculation factors**

$f_0$	14,3	Calculation factor
-------	------	--------------------