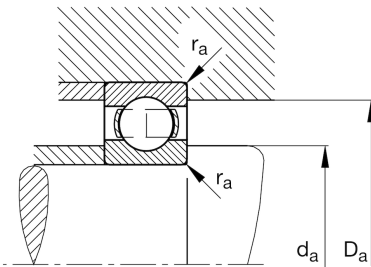
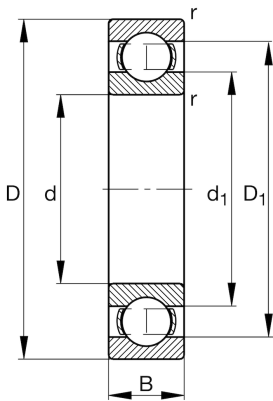
**FAG****6001**

Deep groove ball bearing

Schaeffler ID:
0383905150000Deep groove ball bearing 60, single row,
steel sheet metal cage

Technical information

**Main Dimensions & Performance Data**

d	12 mm	Bore diameter
D	28 mm	Outside diameter
B	8 mm	Width
C_r	5.400 N	Basic dynamic load rating, radial
C_{0r}	2.370 N	Basic static load rating, radial
C_{ur}	134 N	Fatigue load limit, radial
n_G	38.500 1/min	Limiting speed
n_{gr}	24.200 1/min	Reference speed
	20 g	Weight

Dimensions

r_{min}	0,3 mm	Minimum chamfer dimension
d_1	16,7 mm	Shoulder diameter inner ring

Mounting dimensions

$d_{a min}$	14 mm	Minimum diameter shaft shoulder
$D_{a max}$	26 mm	Maximum diameter of housing shoulder
$r_{a max}$	0,3 mm	Maximum fillet radius

Calculation factors

f_0	13,1	Calculation factor
-------	------	--------------------

Temperature range

T_{min}	-30 °C	Operating temperature min.
T_{max}	120 °C	Operating temperature max.